



THE WESTIN
DUBLIN

Meetings Set For Success in Dublin City Centre

The Westin Dublin is perfectly situated in the heart of the city centre overlooking historic Trinity College Dublin. Occupying one of the best locations in Dublin, the Westin is a mere 2 minute stroll to the city's premier shopping area - Grafton Street and is within easy walking distance of the Convention Centre and the International Financial Services Centre, Dublin's major business district. The central city location ensures that all the main transport options, including light rail, tram and intercity rail are all accessible in minutes, while Dublin International Airport is 5 miles in distance.

THE WESTIN DUBLIN

Westmoreland Street,
Dublin 2, Ireland

T +353.(0)1.645.1440

F +353.(0)1.645.1403

E events@thewestindublin.com

www.thewestindublin.com



Inspired Events

Meetings and events are an opportunity to connect with colleagues and explore new ideas. At the Westin Dublin, all the dedicated meeting rooms enjoy natural daylight and provide arenas to cultivate ideas, while the magnificent and historic Banking Hall dating from 1866, provides a lofty space which inspires and cultivates. Providing 8 meeting rooms in addition to the Banking Hall, the meeting and event facilities are available for up to 270 guests. Discover countless ways to meet and collaborate in the heart of the city where 5-star service at the Westin Dublin ensures a perfect outcome.

Destination Venue at the Banking Hall

The Banking Hall, a unique space in the heart of Dublin city centre was originally built to impress and has been sensitively restored to reflect its former status as one of the country's leading 19th century banks. A wonderful equilibrium has been created between historic architectural glory and modern amenities so that the Banking Hall reclaims its prime position as the city's leading destination venue in the 21st century. A separate entrance from College Street combined with the superlative 5-star service of the Westin Associates and the creativity of the team of chefs ensure the prime position of the Banking Hall as the destination venue for executive meetings and gala events in the city centre.

Meetings to Invigorate

Westin Clutter-Free Meetings help planners and guests stay organised and productive with an open room design, socially appropriate amenities and delicious SuperFoodsRx menu choices to keep minds sharp and well. Distractions are removed so delegates can focus on the business at hand for an effective and successful session. Streamlined stations provide paper, pens and beverages to keep everyone's individual work area neat and clear.

Whether you are hosting 25 friends or 270 meeting delegates, the Westin seasoned meetings & events specialists will assist you with every detail. As part of the Starwood family of hotels and resorts, Westin hotels offer a variety of innovative tools to help you book meetings with ease. StarGroups lets you create a free customized website which allows attendees to book reservations as well as access documents via a unique URL. Designed with the meeting planner in mind, the personalised services make it effortless to provide a memorable experience for each and every invitee.

To begin planning your next Westin event, please contact events@thewestindublin.com

Reward Yourself

Meeting planners are enrolled in the Starwood Preferred Planner* program, the most flexible and rewarding frequent guest program in the industry. Whether you plan a meeting, a gala dinner or another event you will earn one Starpoint* for every three U.S. dollars of eligible group revenue. *Starpoints can be redeemed for free stays or upgrade at any participating Westin, Four Points by Sheraton, Sheraton, W, Lé Méridien, St.Regis, Aloft, Element or The Luxury Collection hotel or resort with no blackout dates on Free Night Awards.

*Up to a maximum of 20,000 Starpoints per meeting/event.

All promotions associated with the Starwood Preferred Guests program are subject to the terms and conditions of the Starwood Preferred Guests programme, which are subject to change and can be found at SPG.com.



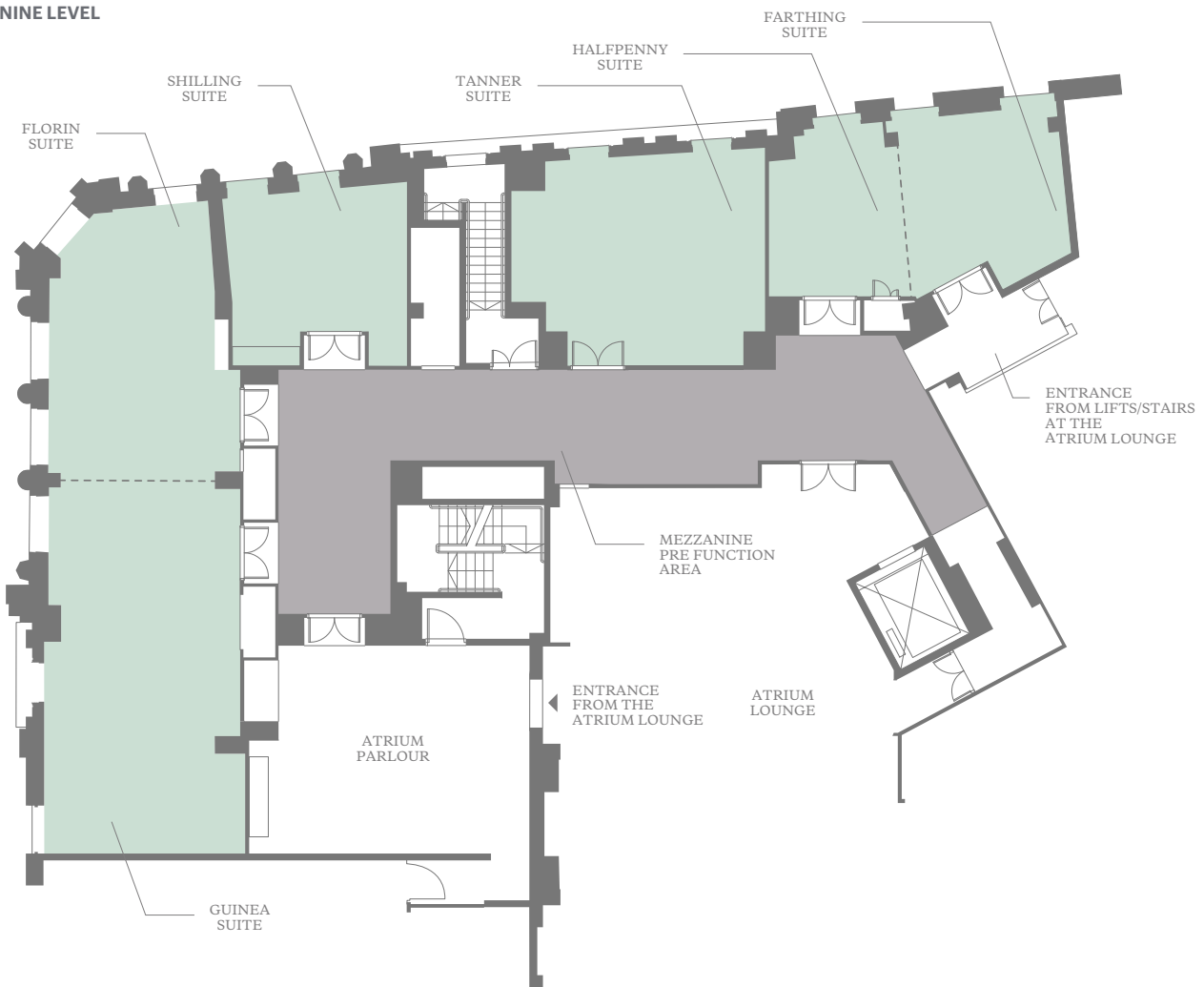


Capacity Chart

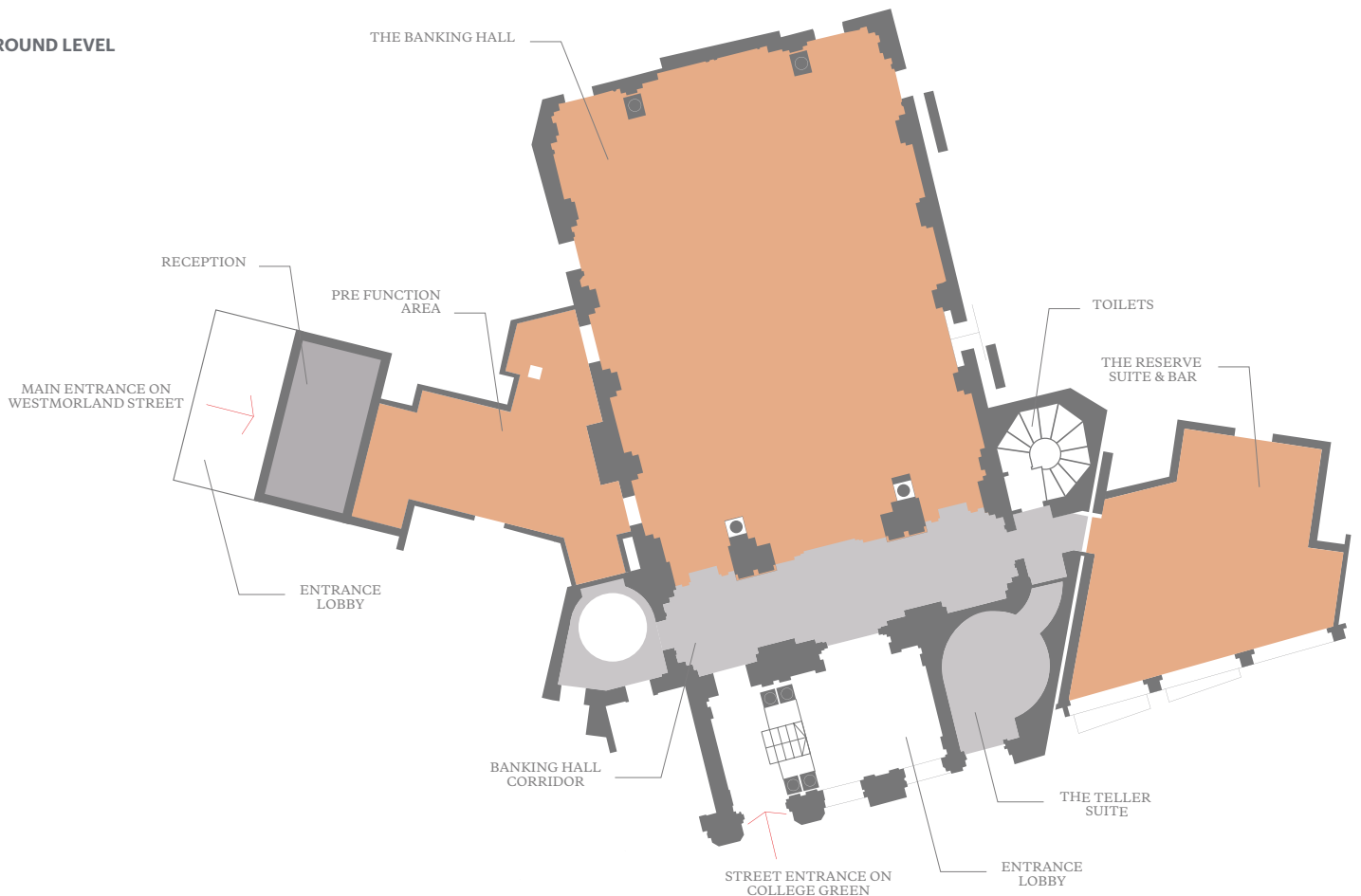
ROOM NAME	DINNER DANCE	SEATED BANQUET	SEATED BUFFET	CLASS ROOM	THEATRE STYLE	STANDING RECEPTION	DRINKS AND CANAPES RECEPTION	DRINKS AND FORK BUFFET RECEPTION	BOARD ROOM	U-SHAPE	HOLLOW	CABARET
GROUND LEVEL												
THE BANKING HALL	140	170	NA	144	270	250	220	220	60	50	60	90
THE RESERVE	NA	50	40	30	50	170	170	100	30	20	24	30
THE TELLER ROOM	NA	8	NA	NA	NA	NA	NA	NA	8	NA	NA	NA
MEZZANINE LEVEL												
THE GUINEA & FLORIN	48	60	60	54	95	100	NA	NA	40	36	40	30
THE GUINEA	NA	40	40	30	60	60	NA	NA	24	27	30	18
THE FLORIN	NA	24	24	24	25	30	NA	NA	18	20	22	12
THE TANNER	NA	30	30	18	30	30	NA	NA	22	20	22	12
THE HA'PENNY & FARTHING	NA	30	30	21	30	30	NA	NA	22	20	20	15
THE SHILLING	NA	NA	NA	NA	NA	NA	NA	NA	8	NA	NA	NA
THE FARTHING	NA	12	NA	9	15	15	NA	NA	8	10	12	NA
THE HA'PENNY	NA	10	NA	-	15	10	NA	NA	10	NA	NA	NA
ROOM NAME	TOTAL SQ. METRE	TOTAL SQ. FEET	LENGTH (M/FT)	WIDTH (M/FT)	HEIGHT MIN (M/FT)	HEIGHT MAX (M/FT)						
GROUND LEVEL												
THE BANKING HALL	275	2960	19.7/64'6"	15.2/49'9"	6.6/21'9"	14.3/47'						
THE RESERVE	101	1087	15/49'2"	10.1/33'2"	2.7/8'10"	3.4/11'0"						
THE TELLER ROOM	21	226	6/19'8"	2.3/17'5"	3.4/11'2"	5.6/18'4"						
MEZZANINE LEVEL												
THE GUINEA & FLORIN	113	1216	19.8/65'1"	6.2/20'3"	2.6/8'7"	2.8/9'3"						
THE GUINEA	67	721	11.6/37'11"	6.2/20'3"	2.6/8'7"	2.8/9'3"						
THE FLORIN	46	495	8.2/27'	6.2/20'3"	2.6/8'7"	2.8/9'3"						
THE TANNER	43	463	7.9/25'11"	5.6/18'6"	2.6/8'8"	2.9/9'5"						
THE HA'PENNY & FARTHING	43	463	8.9/29'2"	5.5/17'11"	2.5/8'2"	2.9/9'6"						
THE SHILLING	26	280	5.6/18'5"	5.5/18'2"	2.7/8'10"	2.9/9'5"						
THE FARTHING	24	258	5.1/16'9"	5.5/17'11"	2.5/8'2"	2.7/8'10"						
THE HA'PENNY	18	194	3.8/12'6"	5.5/17'11"	2.5/8'2"	2.9/9'6"						

Floor Plans

MEZZANINE LEVEL



GROUND LEVEL



Revitalising Rest

Each of the 172 guestrooms and suites offers the Heavenly® Bed and Heavenly® Shower, complimentary high-speed Internet access, cordless phone with data port, air conditioning, refreshment centre, work desk with media hub, in room safe and gourmet coffee. Westin hotels offer guests a 100% smoke-free environment.

The 14 Suite collection is comprised of Junior Suites, Junior Writer Suites, Library Suites, Deluxe Suites and the opulent Presidential Suite. Each is unique with their historic features and many have balconies with wonderful views of the city.

Natural Nourishment

Unique dining options at the Westin Dublin include the Atrium Lounge, an internal courtyard with a 5-storey high glass ceiling is a true haven from the hustle and bustle of city life. Flooded with natural daylight, morning coffees by the fire and lunch are popular while the famous Afternoon Tea and its many variations are legendary in Dublin and beyond.

Located in the atmospheric old bank vaults, the Mint Bar consistently ranks as one of Dublin's top cocktail bars. The Mint Bar is shaking up the cocktail culture of Dublin by offering a concoction of innovative flavours such as bottle-aged cocktails and atomised Gin & Tonic. Offering an array of delectable cocktails combine with live music at weekends, the Mint Bar is the place to be in Dublin city centre.

The restaurant provides a light filled space overlooking the cityscape of Westmoreland Street, while guests can enjoy their delicious SuperfoodsRx breakfast.

Fitness – Work Balance

We know that while you strive to maintain a daily exercise routine, it can often be difficult while travelling. Westin has partnered with New Balance to provide athletic workout gear during your stay, for the normal single fee of €5, to help you pack light and stay fit while travelling. With a choice of city parks and interesting streets on the doorstep of the Westin Dublin, the exercise session is further enhanced.

The hotel's WestinWORKOUT fitness centre is open 24 hours a day and offers weight machines, free weights and cardiovascular equipment.

Hotel Services include Service Express® concierge services, valet, business centre.

